

# Owner's Manual

## Ceiling Fan Installation Instructions



**For 5AHR60XXD-L Series Fans**

**READ AND SAVE THESE INSTRUCTIONS**

Total fan weight with  
light kit included

**MONTE  
CARLO**®

**C**  **US**  
**LISTED**

# Installation

## SAFETY TIPS

**WARNING: TO REDUCE THE RISK OF FIRE, ELECTRIC SHOCK, OR INJURY TO PERSONS, OBSERVE THE FOLLOWING: READ AND SAVE THESE INSTRUCTIONS**

1. Installation work and electrical wiring must be done by qualified person(s) in accordance with applicable codes and standards (ANSI/NFPA 70-1999), including fire-rated construction.
2. Use this unit only in the manner intended by the manufacturer. If you have any questions contact the manufacturer.
3. After making the wire connections, the wires should be spread apart with the grounded conductor and the equipment-grounding conductor on one side of the outlet box and ungrounded conductor on the other side of the outlet box.
4. Before you begin installing the fan, Switch power off at Service panel and lock service disconnecting means to prevent power from being switched on accidentally. When the service disconnecting means cannot be locked, securely fasten a prominent warning device, such as a tag, to the service panel.
5. Be cautious! read all instructions and safety information before installing your new fan. Review the accompanying assembly diagrams.
6. When cutting or drilling into wall or ceiling, do not damage electrical wiring and other hidden utilities.
7. Make sure the installation site you choose allows the fan blades to rotate without any obstructions. Allow a minimum clearance of 7 feet from the floor to the trailing edge of the blade.
8. **WARNING – Risk of fire, electric shock, or personal injury,** The fan in this box may be either directly supported from a structural framing member of a building and/or may be mounted to an outlet box marked acceptable for fan support of 31.8 kg. (70 lbs.) or less. Most outlet boxes commonly used for the support of luminaires may not be acceptable for fan support and may need to be replaced. Consult a qualified electrician if in doubt.
9. Do not bend blade holders during installation to motor, balancing or during cleaning. Do not insert foreign object between rotating blades.
10. Attach the mounting bracket using only the hardware supplied with the outlet box.
11. To reduce the risk of fire or electric shock, do not use this fan with any solid state fan speed control device, or variable speed control.
12. If this unit is to be installed over a tub or shower, it must be marked as appropriate for the application.
13. NEVER place a switch where it can be reached from a tub or shower.
14. The combustion airflow needed for safe operation of fuel-burning equipment may be affected by this unit's operation. Follow the heating equipment manufacturer's guideline safety standards such as those published by the National Fire Protection Association (NFPA), and the American Society for Heating, Refrigeration and Air Conditioning Engineers (ASHRAE) and the local code authorities.
15. Before servicing or cleaning unit, Switch power off at Service panel and lock service disconnecting means to prevent power from being switched on accidentally. When the service disconnecting means cannot be locked, securely fasten a prominent warning device, such as a tag, to the service panel.

## TOOLS REQUIRED

Phillips Screwdriver

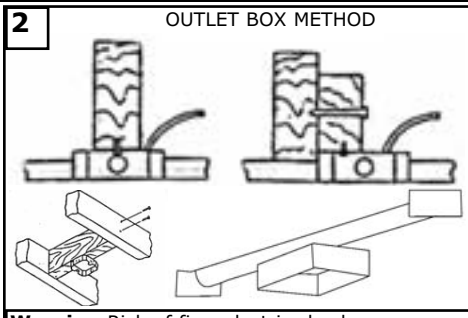
Wire Cutters

Pliers

Step Ladder



**1**  
Before you begin installing the fan, Switch power off at Service panel and lock service disconnecting means to prevent power from being switched on accidentally. When the service disconnecting means cannot be locked, securely fasten a prominent warning device, such as a tag, to the service panel.



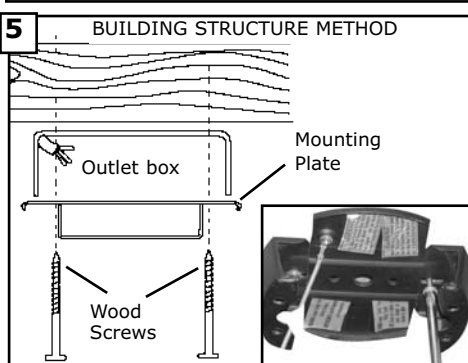
**2**  
**Warning**-Risk of fire, electric shock, or personal injury. The fan in this box may be either directly supported from a structural framing member of a building and/or may be mounted to an outlet box marked acceptable for fan support of 31.8 kg (70 lbs) or less. Most outlet boxes commonly used for the support of luminaires may not be acceptable for fan support and may need to be replaced. Consult a qualified electrician if in doubt.



**3**  
Remove Safety bar from mounting bracket by loosening screws, sliding bar to side, and lifting it off the 2 screws.



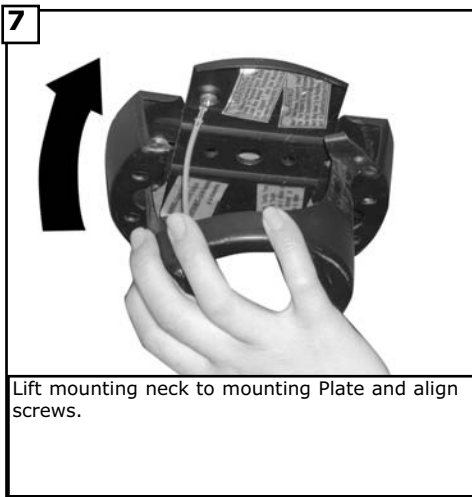
**4**  
Remove the 4 screws attaching the Mounting neck the mounting plate. Retain the 4 screws for re-assembly.



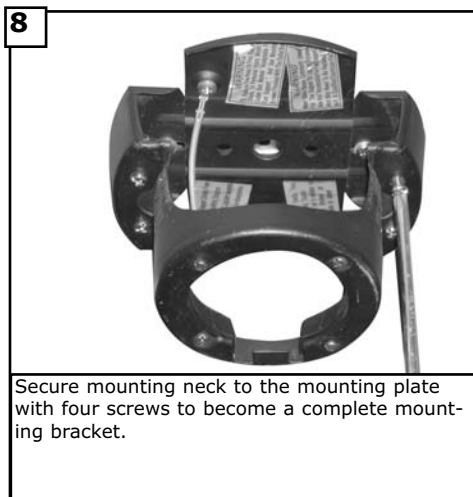
**5**  
Secure mounting plate directly to a joist from the building structure via the two knock out holes on the outlet box. Use only the appropriate wood screws and washers included with your fan. Caution: Wood screws must go through into the building joist.



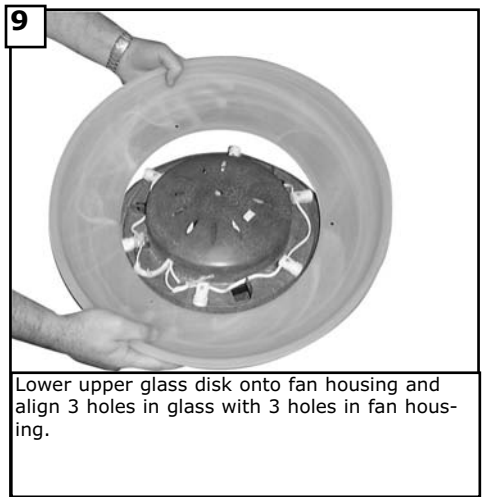
**6**  
Install the mounting Plate to approved fan brace and box combination use only the hardware provided with the fan brace and box.



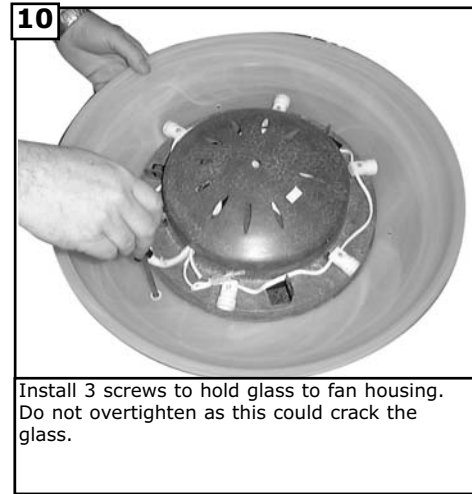
Lift mounting neck to mounting Plate and align screws.



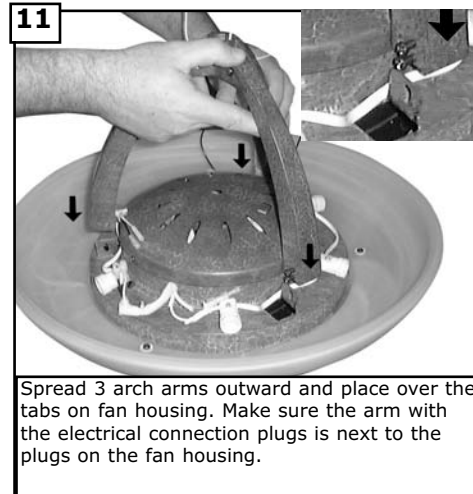
Secure mounting neck to the mounting plate with four screws to become a complete mounting bracket.



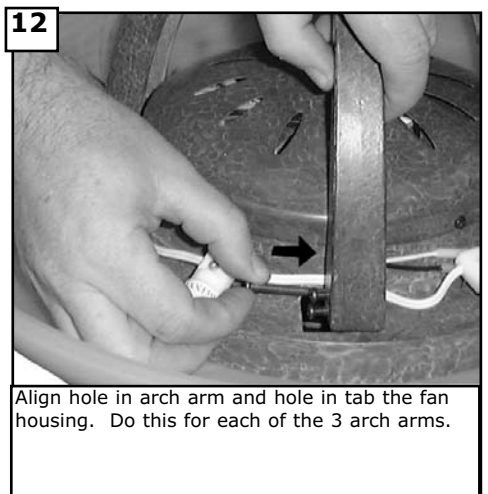
Lower upper glass disk onto fan housing and align 3 holes in glass with 3 holes in fan housing.



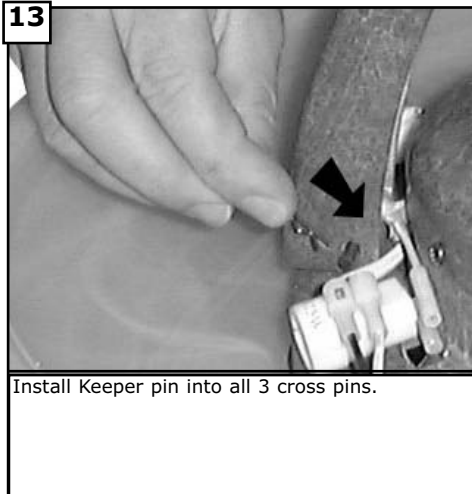
Install 3 screws to hold glass to fan housing. Do not overtighten as this could crack the glass.



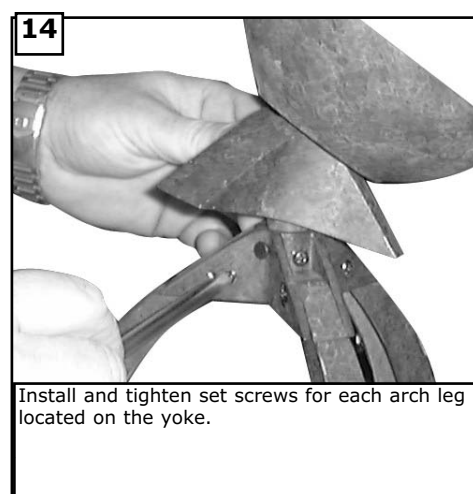
Spread 3 arch arms outward and place over the tabs on fan housing. Make sure the arm with the electrical connection plugs is next to the plugs on the fan housing.



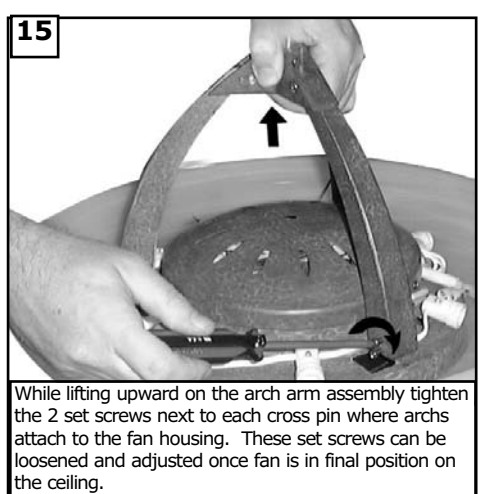
Align hole in arch arm and hole in tab the fan housing. Do this for each of the 3 arch arms.



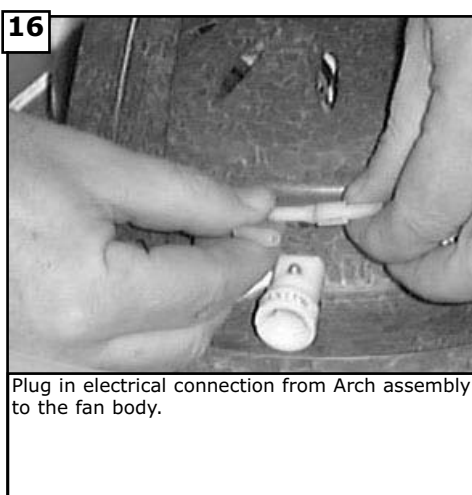
Install Keeper pin into all 3 cross pins.



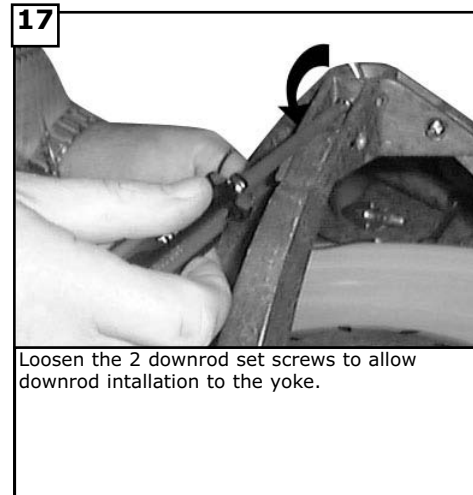
Install and tighten set screws for each arch leg located on the yoke.



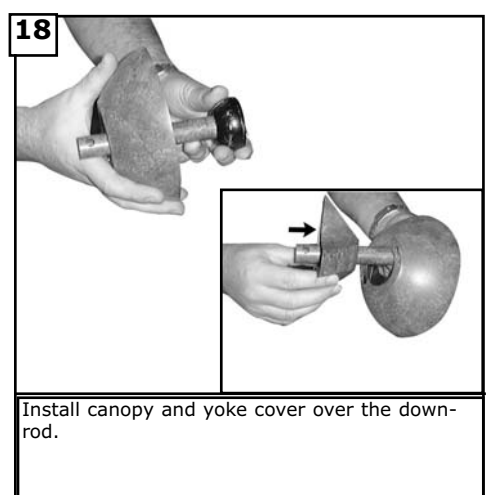
While lifting upward on the arch arm assembly tighten the 2 set screws next to each cross pin where arches attach to the fan housing. These set screws can be loosened and adjusted once fan is in final position on the ceiling.



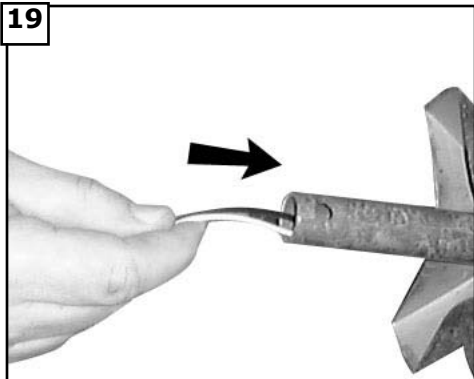
Plug in electrical connection from Arch assembly to the fan body.



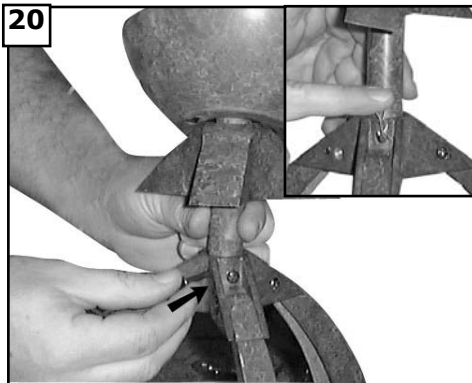
Loosen the 2 downrod set screws to allow downrod intallation to the yoke.



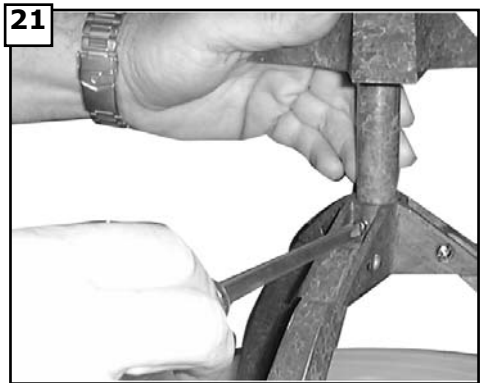
Install canopy and yoke cover over the downrod.



Tread leadwires and safety cable through the downrod.



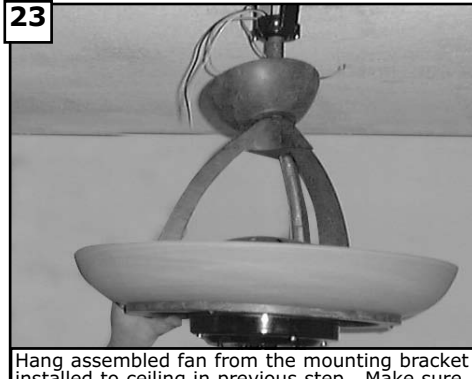
Place downrod into the yoke, align the holes in the yoke with the holes in the downrod and install cross pin. Install keeper pin into cross pin.



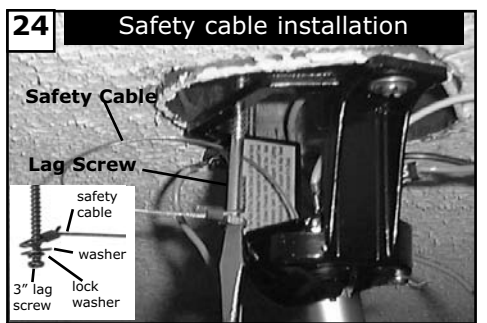
Tighten set screws to hold downrod securely in the yoke. Drop cover over yoke.



Install 6x15 Watt candelabra bulbs. Bulbs included.



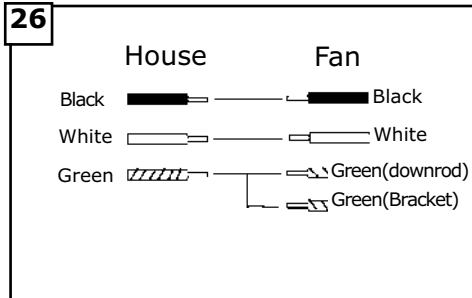
Hang assembled fan from the mounting bracket installed to ceiling in previous step. Make sure the fan is hanging straight. Rotate fan until the tab on the Mounting bracket engages the slot on the Downrod Ball. This must be done to prevent the fan body from rotating when the blades are in motion.



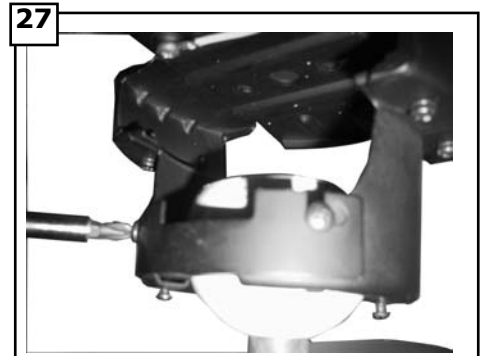
Fan and light kit combinations over 35 lbs, in both flush and downrod mode the safety cable must be installed into the house structure beams using the 3" lag screws, washers, and lock washers. provided. Make sure that when the safety cable is fully extended the lead wires are longer than the cable and no stress is placed on the lead wires.



Make wire connections to power source using wire nuts provided. Make sure that no filiments are outside of the wirenut. After making the wire connections, the wires should be spread apart with the grounded conductor and the equipment-grounding conductor on one side of the outlet box and ungrounded conductor on the other side of the outlet box.



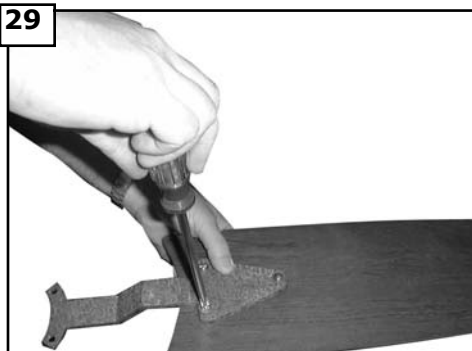
Make wire connections as per above diagram. Connect the white wire from the fan to the White or Neutral wire from the power source. Connect the black wire from the fan to the Black or hot wire from the power source. Connect all Green / Yellow wires from the fan, Downrod and mounting bracket to the Ground wire from the house.



Re-install safety bar removed in step. 3 by placing safety bar on screws, sliding into place, and tightening the 2 screws.



Place floating brackets onto blades aligning holes in blade with the floating bracket.



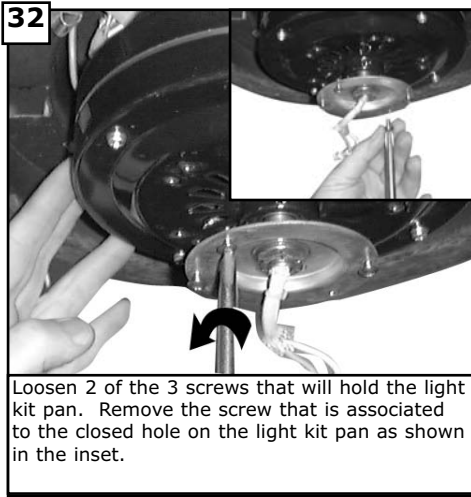
Place blade arms onto the other side of the blade and aligning holes. Insert screws with fabric washers through the holes and tighten securely.



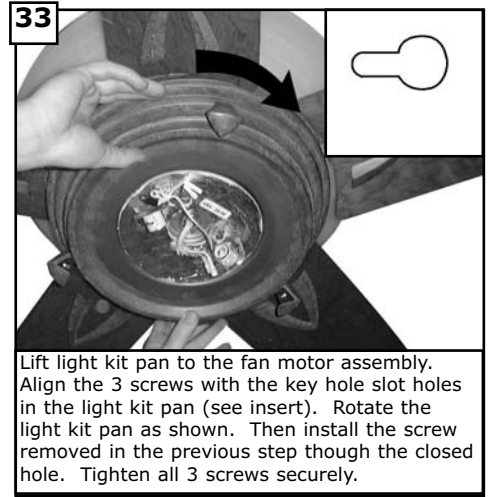
Remove motor screws from fan motor and save.



Install all 5 fan blade assemblies to the motor as shown above. Tighten screws securely.



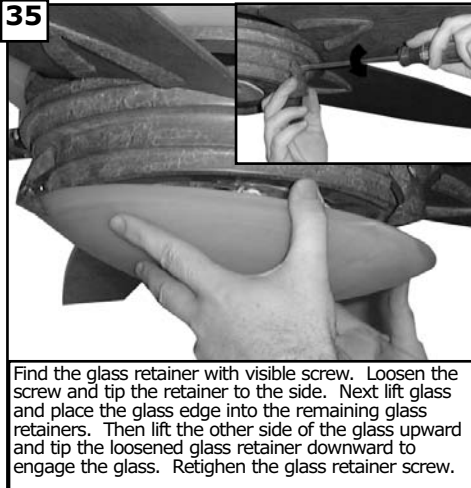
Loosen 2 of the 3 screws that will hold the light kit pan. Remove the screw that is associated to the closed hole on the light kit pan as shown in the inset.



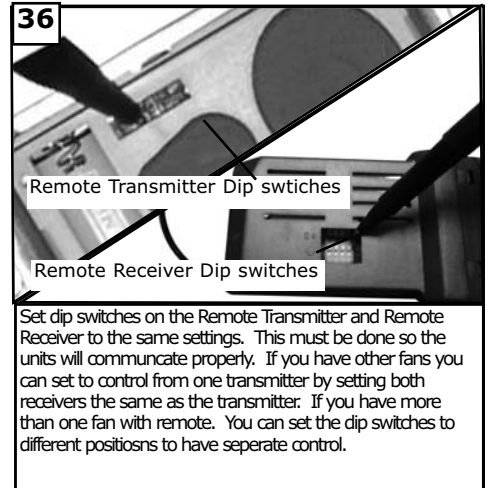
Lift light kit pan to the fan motor assembly. Align the 3 screws with the key hole slot holes in the light kit pan (see insert). Rotate the light kit pan as shown. Then install the screw removed in the previous step through the closed hole. Tighten all 3 screws securely.



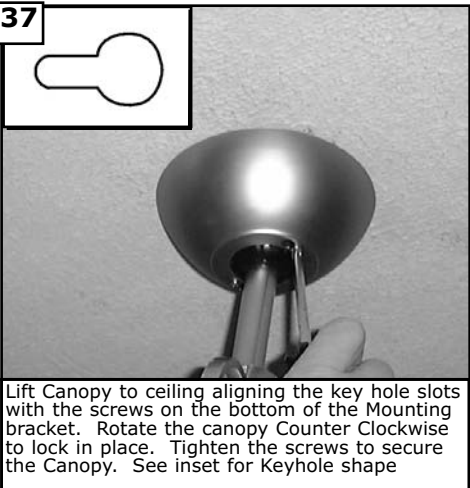
Install the 2x50 watt halogen bulbs. Bulbs Included. Do not touch bulb surface as oily residue from skin can cause the bulb to explode.  
**WARNING: Over lamping the fan will result in the fan lights shutting down until the proper wattage of bulbs are installed. Reset the lights by turning off the wall switch, breaker, or by remote. Replace bulbs with the correct wattage bulbs, turn the power on.**



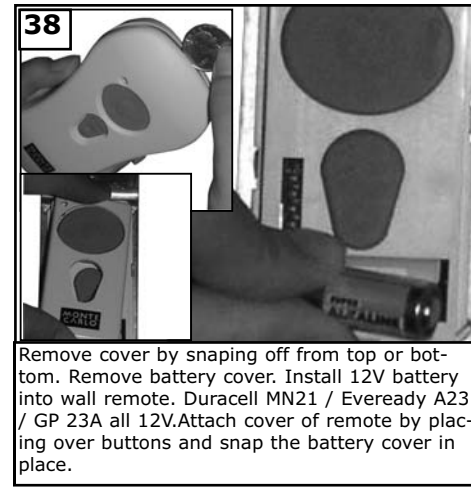
Find the glass retainer with visible screw. Loosen the screw and tip the retainer to the side. Next lift glass and place the glass edge into the remaining glass retainers. Then lift the other side of the glass upward and tip the loosened glass retainer downward to engage the glass. Retighten the glass retainer screw.



Set dip switches on the Remote Transmitter and Remote Receiver to the same settings. This must be done so the units will communicate properly. If you have other fans you can set to control from one transmitter by setting both receivers the same as the transmitter. If you have more than one fan with remote. You can set the dip switches to different positions to have separate control.



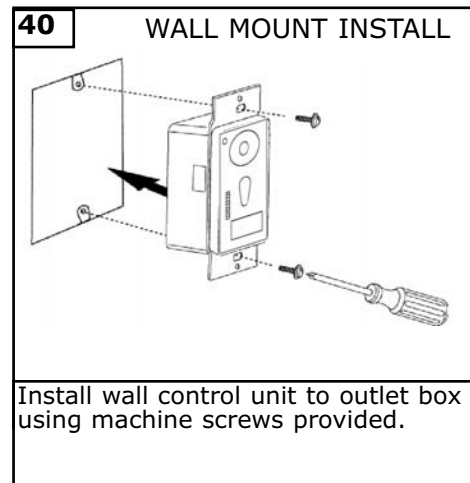
Lift Canopy to ceiling aligning the key hole slots with the screws on the bottom of the Mounting bracket. Rotate the canopy Counter Clockwise to lock in place. Tighten the screws to secure the Canopy. See inset for Keyhole shape



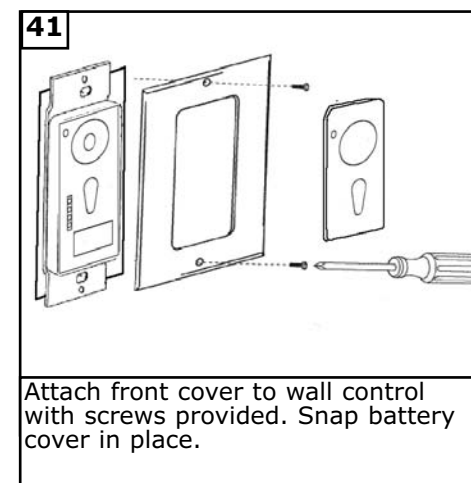
Remove cover by snapping off from top or bottom. Remove battery cover. Install 12V battery into wall remote. Duracell MN21 / Eveready A23 / GP 23A all 12V. Attach cover of remote by placing over buttons and snap the battery cover in place.



Place face plate over battery compartment and buttons. Place remote over 2 pins on front cover. Attach cover of remote by placing over 4 pins and snapping into place.

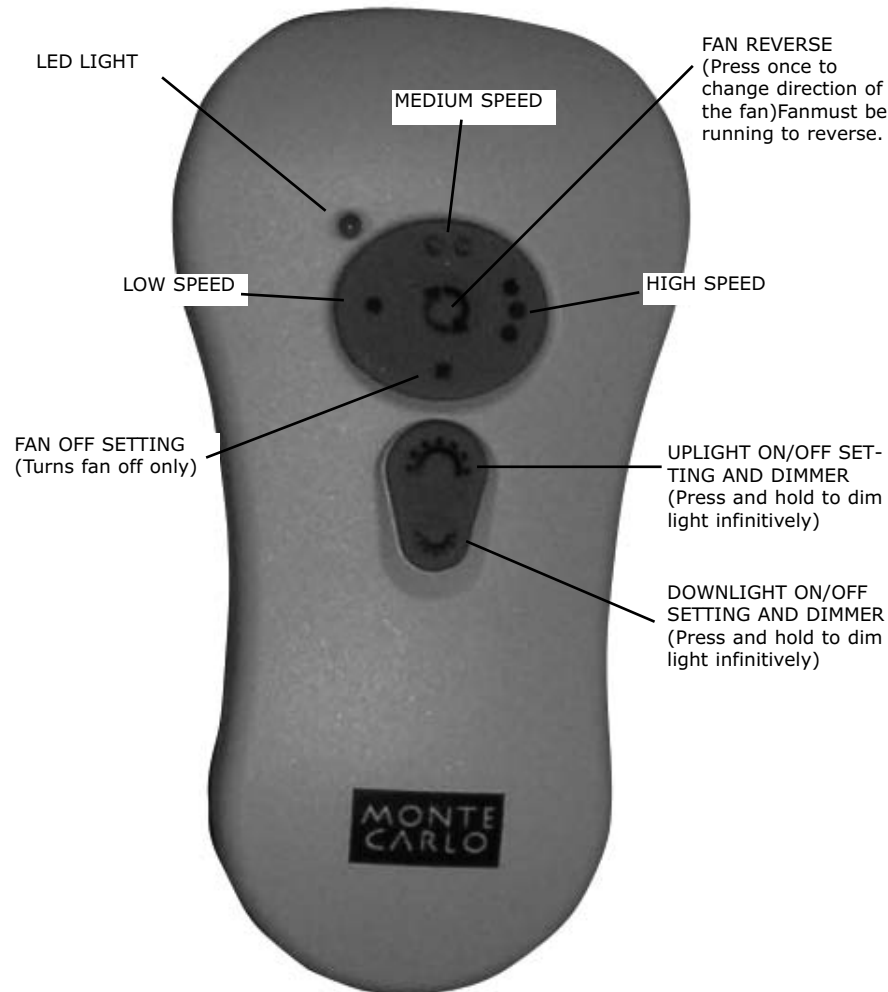


Install wall control unit to outlet box using machine screws provided.



Attach front cover to wall control with screws provided. Snap battery cover in place.

## Remote Control Transmitter Features:



**FAN SPEED** Depress "1 dot" for low speed, "2 dots" for medium or "3 dots" for high. To turn fan off press square".

**LIGHT DIMMER** To turn light on, press light dimmer once quickly. To turn off press once quickly while light is on. To dim light hold down button "light dimmer". The light will cycle from bright to dim to bright until button is released. Light will maintain last setting if turned off.

**FORWARD/REVERSE** Depress rev button allow a few seconds for remote to change rotation direction with fan running.

# Trouble Shooting

If you have difficulty operating your new ceiling fan, it may be the result of incorrect assembly, installation, or wiring. In some cases, these installation errors may be mistaken for defects. If you experience any faults, please check this Trouble Shooting Chart. If a problem cannot be remedied, or you are experiencing difficulty in installation, please call our Customer Service Center at the number printed on your parts list insert sheet.

**Warning: Before servicing or cleaning unit, Switch power off at Service panel and lock service disconnecting means to prevent power from being switched on accidentally. When the service disconnecting means cannot be locked, securely fasten a prominent warning device, such as a tag, to the service panel.**

1. If fan does not start:

1. Check main and branch circuit fuses or circuit breakers.
2. Check line wire connections to fan and switch wire connections in switch housing.
3. Check to make sure the dip switches from the transmitter and receiver are set on the same frequency.

**CAUTION: Make sure main power is turned off.**

2. If fan sounds noisy:

1. Check to make sure all screws in motor housing are snug (not over tightened).
2. Check to make sure the screws which attach the fan blade holder to the motor are tight.
3. Check to make sure wire nut connectors in switch housing are not rattling against each other or against the interior wall of the switch housing.

**CAUTION: Make sure main power is turned off before entering switch housing.**

4. Some fan motors are sensitive to signals from Solid State variable speed controls. **DO NOT USE a Solid State variable speed control.**
5. Allow "break-in" period of 24 hours. Most noises associated with a new fan will disappear after this period.

3. If fan wobbles:

1. Make sure that the ridge of the canopy engages the notch in the downrod ball.
2. Check that all blades are screwed firmly into blade holders.
3. Check that all blade holders are tightened securely to motor.
4. Make sure that canopy and mounting bracket are tightened securely to ceiling junction box and junction box is mounted firmly to ceiling joist.
5. Most fan wobble problems are caused when blade levels are unequal. Check this level by selecting a point on the ceiling above the tip of one of the blades. Measure this distance from blade tip to ceiling. Keeping measure within 1/8", rotate the fan until the next blade is positioned for measurement. Repeat for each blade. If all blade levels are not equal, you can adjust blade levels by the following procedure. To adjust a blade tip down, insert a washer (not supplied) between the blade and blade holder at the screw closest to the motor. To adjust a blade tip up, insert washer (not supplied) between the blade and blade holder at the two screws farthest from the motor. Reverse the position of the washer if blades mount from top of blade.
6. If blade wobble is still noticeable, interchanging two adjacent (side by side) blades can redistribute the weight and possibly result in smoother operation.

4. If light does not work:

1. Check wire from fan to make sure it is connected to hot wire from house.
  2. Check for loose or disconnected wires in fan switch housing.
  3. Check for loose or disconnected wires in light kit.
  4. Check for faulty light bulbs.
- WARNING: Over lamping the fan will result in the fan lights shutting down until the proper wattage of bulbs are installed. Reset the lights by turning off the wall switch, breaker, or by remote. Replace bulbs with the correct wattage bulbs, turn the power on.**

**CAUTION: Make sure main power is turned off before entering switch housing.**

## MONTE CARLO®

Customer Service Center:  
301 West Washington St.  
Riverside, NJ 08075  
1-800-519-4092  
[www.montecarlofans.com](http://www.montecarlofans.com)

REV. 1

2/4/04

Step 8 in safety tips & step 2 page 2 & battery remote